

Christian Mushroom Trees

See also

Wasson and Allegro on Amanita Mushroom Trees in the Bible
Annotated Pages from Wasson's Books *Soma* and *Persephone's Quest*

Contents

[Comments](#)

[Plaincourault Fresco](#)

[Bory's Plaincourault Lookalike Painting](#)

[Italian Umbrella Pines](#)

[Montecassino Illustration Showing Psilocybe and Mandrake](#)

[*Other Depictions of Mandrake, for Comparison*](#)

[Eustace window at Chartres with Many Mushroom Trees](#)

[Full Eustace window](#)

[Gideon and the Fleece -- Window at Laon Showing Multiple Mushrooms](#)

[Canterbury Psalter Showing Cluster of Mushroom Fruiting-Bodies](#)

[*Mushroom Matching the Canterbury Psalter*](#)

[*Mushroom Matching the Canterbury Psalter*](#)

[*Mushroom Matching the Canterbury Psalter*](#)

[*Mushroom Matching the Canterbury Psalter*](#)

[*Mushroom Matching the Canterbury Psalter*](#)

[*Cluster Matching the Canterbury Psalter*](#)

[*Cluster Matching the Canterbury Psalter*](#)

[*Cluster of Mushrooms Like White One in Canterbury Psalter*](#)

[*Cluster Matching the Canterbury Psalter*](#)

[*Cluster Matching the Canterbury Psalter*](#)

[*Ball on Stem with Unbroken Veil*](#)

[*Knob & Stem*](#)

[*Ball on Stem*](#)

[Christian Art: Eusebian Letter with Portrait of Eusebius, Showing Mushroom Trees](#)

[Christian Art: Erevan, Matenadaran: 'Baptism', mid-11th century. -- Several Mushroom Trees](#)

[Water-from-Rock Ossuary, Matching Psilocybe](#)

[*Mushrooms Showing Lines on Stem Like Flowing Water*](#)

[*Matches Ossuary*](#)

[*Flowing Water*](#)

[The Mushroom in Mithra's Leg and Hem](#)

[Upward Gesturing](#)

[*Gesturing Veil*](#)

[Cluster](#)

[*Cluster*](#)

[*Cluster*](#)

[*Cluster*](#)

[*Cluster*](#)

[*Cluster*](#)

[*Cluster with Water Stream Flowing from Pancake*](#)

[*Cluster*](#)

[*Cluster*](#)

[*Cluster*](#)

[*Cluster*](#)

[*Cluster*](#)

[*Cluster*](#)

[Mushrooms That Look Like Mushroom Trees](#)

[Mushrooms Forming a Semicircle Like Tree Canopy](#)
[Like Mushroom Tree](#)
[Bun/Tree](#)
[Tree Under-branches](#)
[Mushroom Tree](#)
[Flattened Tree Tops](#)
[Like Mushroom Trees](#)
[Like Mushroom Trees](#)
[Grove of Tree-Sized Mushrooms](#)
[Buns, Like Xn Trees](#)
[Like Mushroom Trees](#)
[Upturned Cap with Designs Like Foliage Detail](#)
[Tall](#)
[Large Blue-Stained](#)
[Large Single with Lines](#)
[Amanita with Teeth Veil Remnants](#)
[Phallic](#)
[Phallic](#)
[Lone](#)
[Every Which Way](#)
[Crossing of Stems](#)
[Crossing of Stems](#)
[Wandering](#)
[Spiralling Stem](#)
[Sort](#)
[Half Torn Veil](#)
[Long Snaky Stems](#)
[Mushrooms that Look Like Buns or Bread](#)
[Side Shot](#)
[Wobble Babies](#)
[Baby Helmet](#)
[Tearing Veil with Knife](#)
[Torn Veil Underside](#)
[Torn Veil Underside](#)

Comments

So much for the theory that the Church of the Middle Ages didn't know the Eucharist was visionary plants, a theory that is all too favored by the over-extreme rabidly anti-Christianity entheogen scholars who wish to tell a story of 2000 long years of complete darkness and suppression. Against that false story driven too much by black-and-white moral tale or counter-moralizing that overshoots its mark and swings the pendulum too far, the evidence forces us to assume that the Church to a significant extent was conscious that the Eucharist was visionary plants.

So it is time to go back and rewrite the story that the entheogen scholars have been trying to tell so far. The moral is, as I have always pointed out, the way to win the battle is not to pose it as a good-guys vs. bad-guys us-vs.-them high-school vulgar oversimplistic battle. The way to win is to prove that Christianity has always really been based on the use of visionary plants, even within the official tradition.

Basically, the bishops (some of the important bishops and others) knew and understood full well that the Eucharist was visionary plants: a good number of bishops knew it, a good number of monks/religious knew it, a good number of lay knew it. This wrecks and makes hash out of the too-accustomed story of the entheogen scholars that the big bad Church was the opposite of entheogen use.

The real story is not nearly so simple and clear-cut black-and-white, all-or-nothing. Per the maximal entheogen theory, we ought to do the opposite and assume that Christianity was always, everywhere, for everyone, consciously and matter-of-factly entheogenic -- and then only back down from that maximal assumption as we are forced to do so by the negative evidence.

An uncomprehending and blunt blanket hatred of Christianity is not the way to win the entheogenic case. The way to win is to enter the belly of the beast and reveal the great extent to which it has always been knowingly entheogen-driven.

There are many more instances; see for example *Entheos* Issue 1. As Panofsky writes, “The Plaincourault fresco is only one example ... of a conventionalized tree type, prevalent in Romanesque and early Gothic art, which art historians actually refer to as a ‘mushroom tree’ ... there are hundreds of instances exemplifying this development... ”.

I walked into a used bookstore and found all these clear, ideal examples of mushroom trees and blatant mushrooms in the first 10 minutes. In this bookstore visit, it took only 10 minutes to gather 9 strong examples of mushroom portrayals in Christian art, thus successfully calling into question the familiar assumption that "visionary plants are rare in Christian art". I'm not counting the many *Datura-lilies* seen in this visit.

Entheos journal has shown many such mushroom trees.

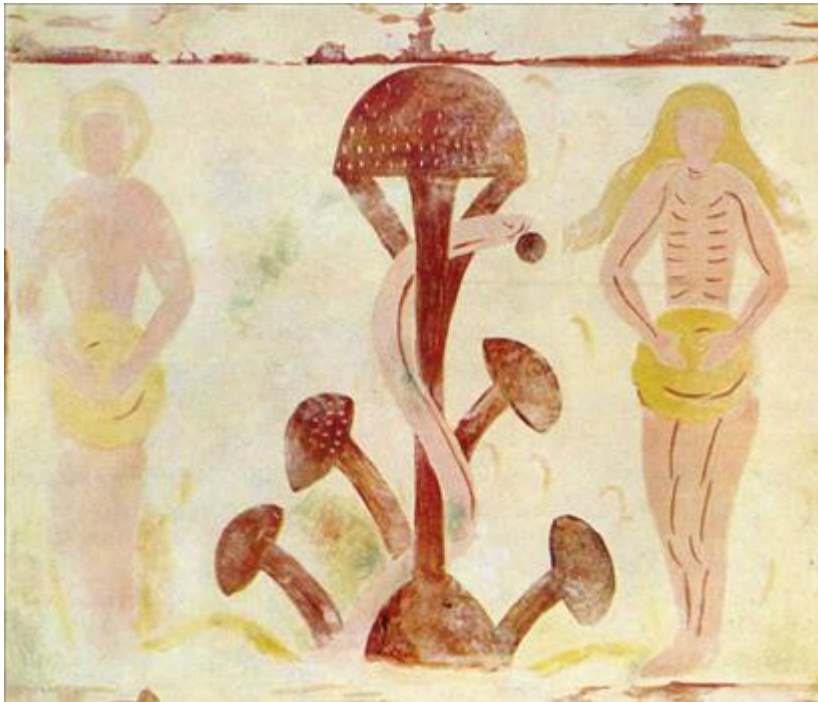
<http://www.entheomedia.org>

Plaincourault Fresco



The Plaincourault fresco.

Bory's Plaincourault Lookalike Painting



Bory's mid-20th Century painting that's a copy (imitation, re-creation) of the original fresco.

Italian Umbrella Pines

The art historians Wasson communicated with around 1952 claimed that Christian mushroom trees are impressionistic stylizations of Italian Umbrella pines.









Montecassino Illustration Showing Psilocybe and Mandrake



Mushroom-shaped and mandrake-shaped Eden trees, with mushroom-shaped grape clusters on the ground in between. Found at <http://pharmacratic-inquisition.com/nontesters/pharmacratic/> – “Adam and Eve with serpent-entwined Psilocybe mushroom (caduceus). Italy [Abbey of Montecassino]; circa 1072 - British Library”. Mandrake is chemically similar to Henbane and Belladonna. Mandrake drawings traditionally show a human body instead of the tree trunk shown here.

Other Depictions of Mandrake, for Comparison

Other depictions of mandrake, for comparison:



Eustace window at Chartres with Many Mushroom Trees

Emile Mâle (Dora Nussey, tr.), *The Gothic Image: Religious Art in France of the Thirteenth Century* (Icon Editions Series). 1913 title of the initial English translation of the 3rd French edition: *Religious Art in France of the Thirteenth Century: A Study in Medieval Iconography and Its Sources of Inspiration*, <http://www.amazon.com/o/ASIN/0064300323> (Amazon shows the full text but not the images).

Page 3 shows a Chartres stained-glass window with several mushroom trees -- including a plain and starkly clear literal representation of a psilocybin-shaped mushroom, shown below. This is a small portion of a very large window with many clear mushroom depictions. The book shows a sharp, black and white close-up of this portion of the window, which is representative of the other parts of the window.

Information from the book: "Fig. 1.-- The Sky, Water, and Trees. From the Legend of St. Eustace. Window at Chartres."

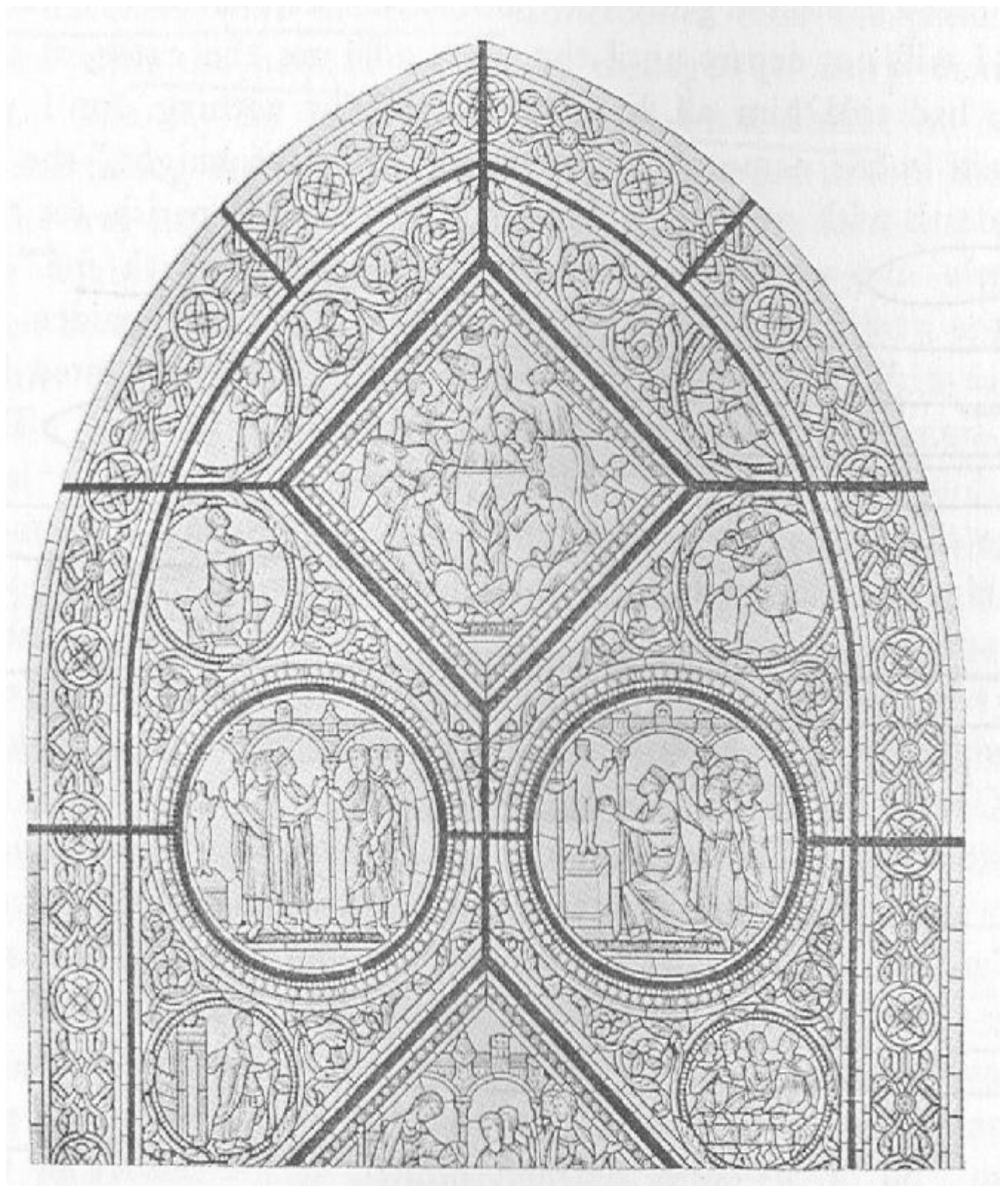
The book presents black-and-white renderings of stained-glass windows.

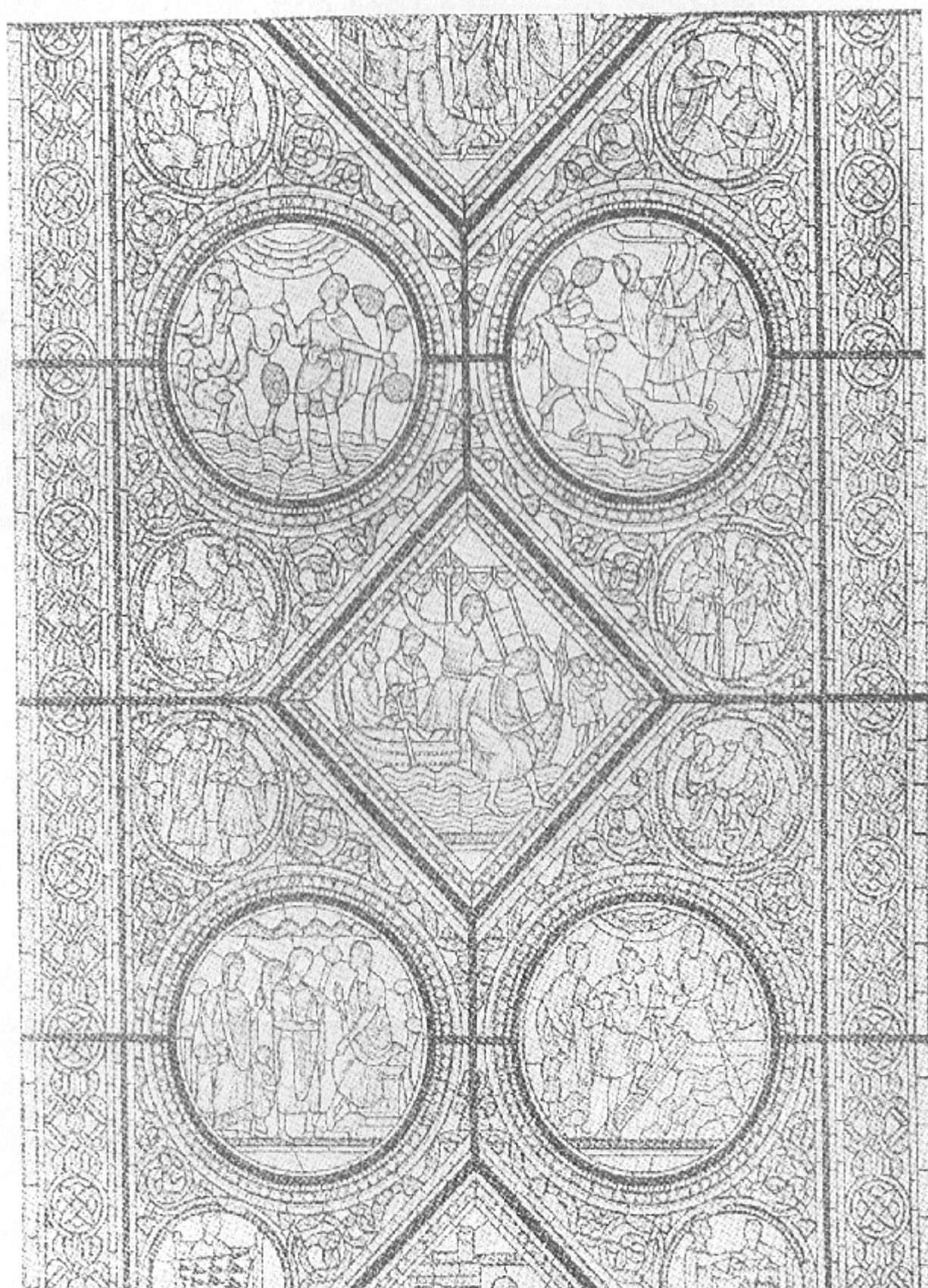
275 "Legend of St. Eustace (first part, window at Chartres), p. 276 second part, 277 third part

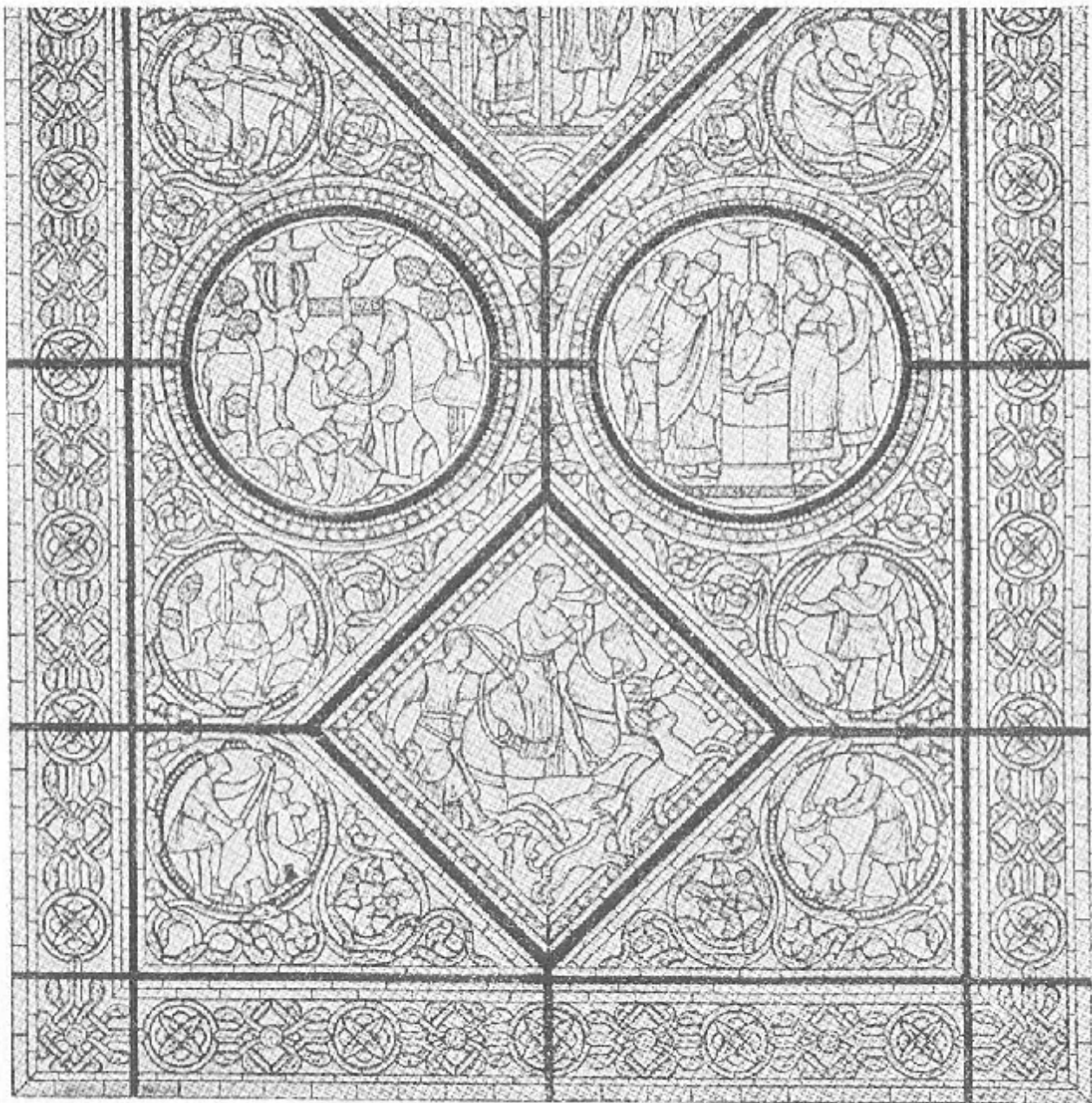


The above is a portion of the window, shown below. Imagine the same detail and sharpness for the whole window.

Full Eustace window







Gideon and the Fleece -- Window at Laon Showing Multiple Mushrooms

Page 16 of the same book shows a stained-glass window with a couple fairly good mushroom trees, below.

Information from the book: "Fig. 8.-- Gideon and the Fleece (window at Laon) (From Florival and Midoux, by permission of M. de Florival).

This is a scan of the black-and-white rendering in the book:

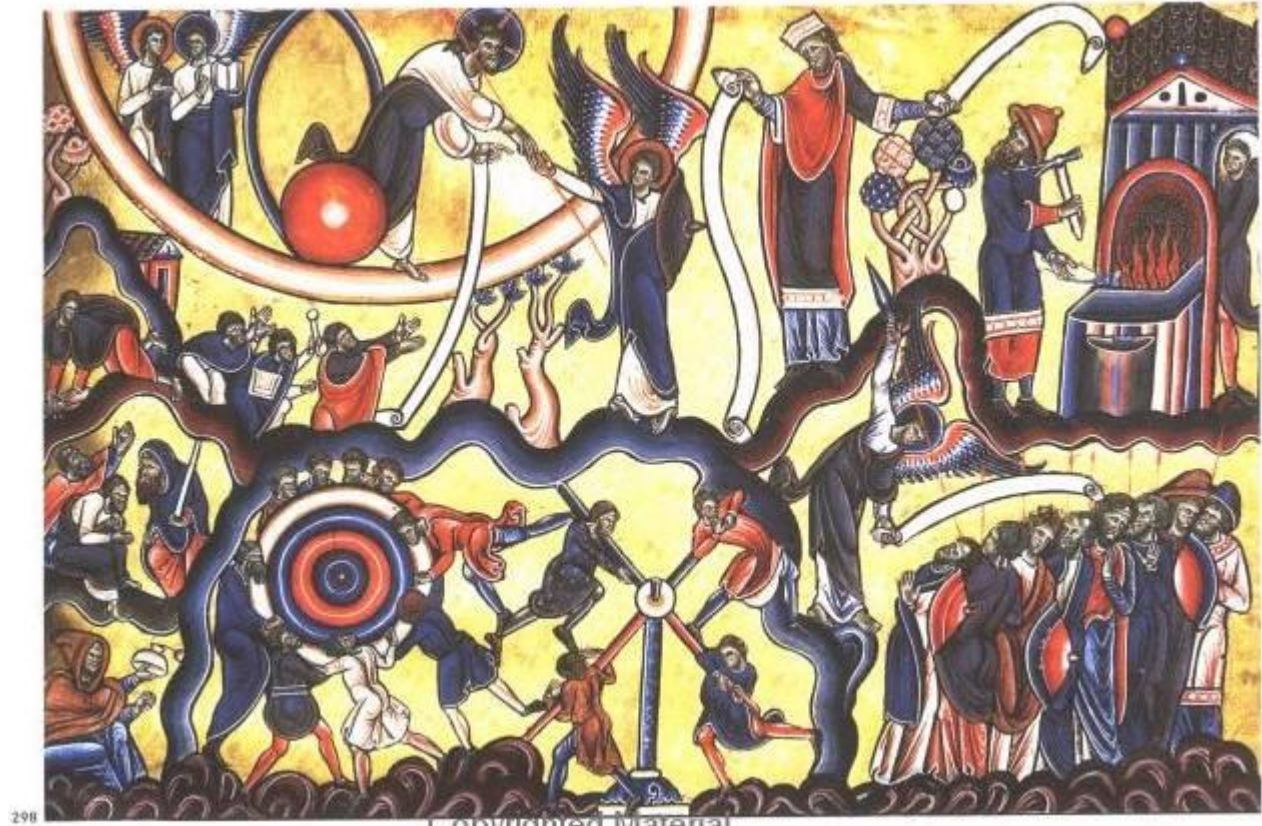




The 2nd from the left looks like several Christian mushroom trees.

Canterbury Psalter Showing Cluster of Mushroom Fruiting-Bodies

The below is from the Canterbury Psalter, early 12th C. It appears in Marc Lachize-Rey and Jean-Pierre Luminet, *Celestial Treasury: From the Music of the Spheres to the Conquest of Space*, 2001, <http://www.amazon.com/exec/obidos/ASIN/0521800404>, page 178.



Selected areas of the illustration:



The object held in the hand below the red ball matches the white mushroom in the mushroom tree on the right:



Mushroom Matching the Canterbury Psaltery



This looks like the object held in the hand and the small white mushroom in the cluster.



Mushroom Matching the Canterbury Psaltery



Mushroom Matching the Canterbury Psalter



Mushroom Matching the Canterbury Psalter



Cluster Matching the Canterbury Psaltery



Cluster Matching the Canterbury Psaltery



Cluster of Mushrooms Like White One in Canterbury Psalter



Cluster Matching the Canterbury Psalter



Cluster Matching the Canterbury Psalter



The crossing of stems looks like the mushroom tree cluster's woven-together trees.

Ball on Stem with Unbroken Veil



One on left like Xn MT.

Knob & Stem



Ball on Stem



Christian Art: Eusebian Letter with Portrait of Eusebius, Showing Mushroom Trees

Book:

Treasures in Heaven: Armenian Illuminated Manuscripts

Thomas Mathews, Roger Wieck

<http://www.amazon.com/o/ASIN/0691037515>

June 1994

Page 44 shows a mushroom tree in the lower left.

Information from the book: "Fig. 23 - *Eusebian Letter with Portrait of Eusebius*, by the First Painter, 1300-07. Los Angeles, University of California, University Research Library, Special Collections, Armenian MS 1, p. 4 (cat. 36)."

Scan of a photocopy of the black and white rendering in the book:



Below, page 45 shows a mushroom tree in the lower right:

Information from the book: "Fig. 24 - *Eusebian Letter with Portrait of Carpianos*, by the First Painter, 1300-07. Los Angeles, University of California, University Research Library, Special Collections, Armenian MS 1, p. 5 (cat. 36)."

Scan of a photocopy of the black and white rendering in the book:



Christian Art: Erevan, Matenadaran: 'Baptism', mid-11th century. – Several Mushroom Trees

Treasures in Heaven: Armenian Illuminated Manuscripts

Thomas Mathews, Roger Wieck

<http://www.amazon.com/o/ASIN/0691037515>

June 1994

Page 47 has two illustrations -- one has 3 mushroom trees:

Information from the book: "Fig. 27 *Baptism*, mid-11th century. Erevan, Matenadaran 7736, fol. 14v."



On Page 47, an image shows 2 mushroom trees:

Information from the book: "Fig. 28 *Baptism*, mid-11th century. Erevan, Matenadaran 7736, fol. 17."



Page 93 has the illustration just in black and white, of the illustration used for the cover of Bible Review, October 2001, the giant Amanita-cap Last Supper table shown at my page entheogenpicfinds.htm - "Last Supper around an Amanita-cap table". The mushroom is hardly perceivable in this merely black-and-white rendering -- color is essential in cases such as these.

I also have a color photocopy of an Eden cycle showing the tree as generally the same type as a mushroom tree: once the 'mushroom tree' idea was standardized, it was sometimes expressed very subtly: not recognizable by a cap shape, but rather, by the grouping of all the leaves in some shape at the top, and with two cut-off arms -- branch-stubs, leaving a bare or near-bare trunk that, as a result, indicates a mushroom stem. One color picture in this book shows birds nesting in such a loosely portrayed single-top mushroom-tree that doesn't have cap-shaped top, but more of just a circle-top.

Water-from-Rock Ossuary, Matching Psilocybe



Ossuary showing the vertical “stream of water” (stem) flowing from the “rock” (cap), with guys grabbing and chewing at the stem. A strange way to portray a rock with water flowing from it.

Peter's Water Miracle, from a sarcophagus, 3. 325, Museo Nazionale delle Terme, Rome.

This scan is from the book

The Clash of Gods: A Reinterpretation of Early Christian Art
by Thomas F. Mathews

<http://www.amazon.com/gp/product/0691009392>

p. 87

Mushrooms Showing Lines on Stem Like Flowing Water



The lines on the stem above look like on the water-from-rock ossuary.



Matches Ossuary



The one on the right looks like the water-from-a-rock carving on the Christian ossuary, especially if you were to show lines on the stem as seen in other specimens.

Flowing Water



The Mushroom in Mithra's Leg and Hem

todo: scan

Upward Gesturing



The upturned veil sides are like the cut-off branches' gesture on Christian mushroom trees.

Gesturing Veil





Cluster



Cluster



Cluster





Cluster



Cluster



Cluster



Cluster with Water Stream Flowing from Pancake



Cluster



Cluster



Cluster



Cluster



Cluster



Cluster

Mushrooms That Look Like Mushroom Trees

Mushrooms Forming a Semicircle Like Tree Canopy



Like Mushroom Tree



The one on the left above the lighter looks like some Christian mushroom trees because of the rounded top and unbroken veil.

Bun/Tree



The one to the right of the big one looks like some Christian mushroom trees because of the rounded top and unbroken veil. Note the amanita-like veil remnant speckles.

Tree Under-branches





Flattened Tree Tops



Like Mushroom Trees

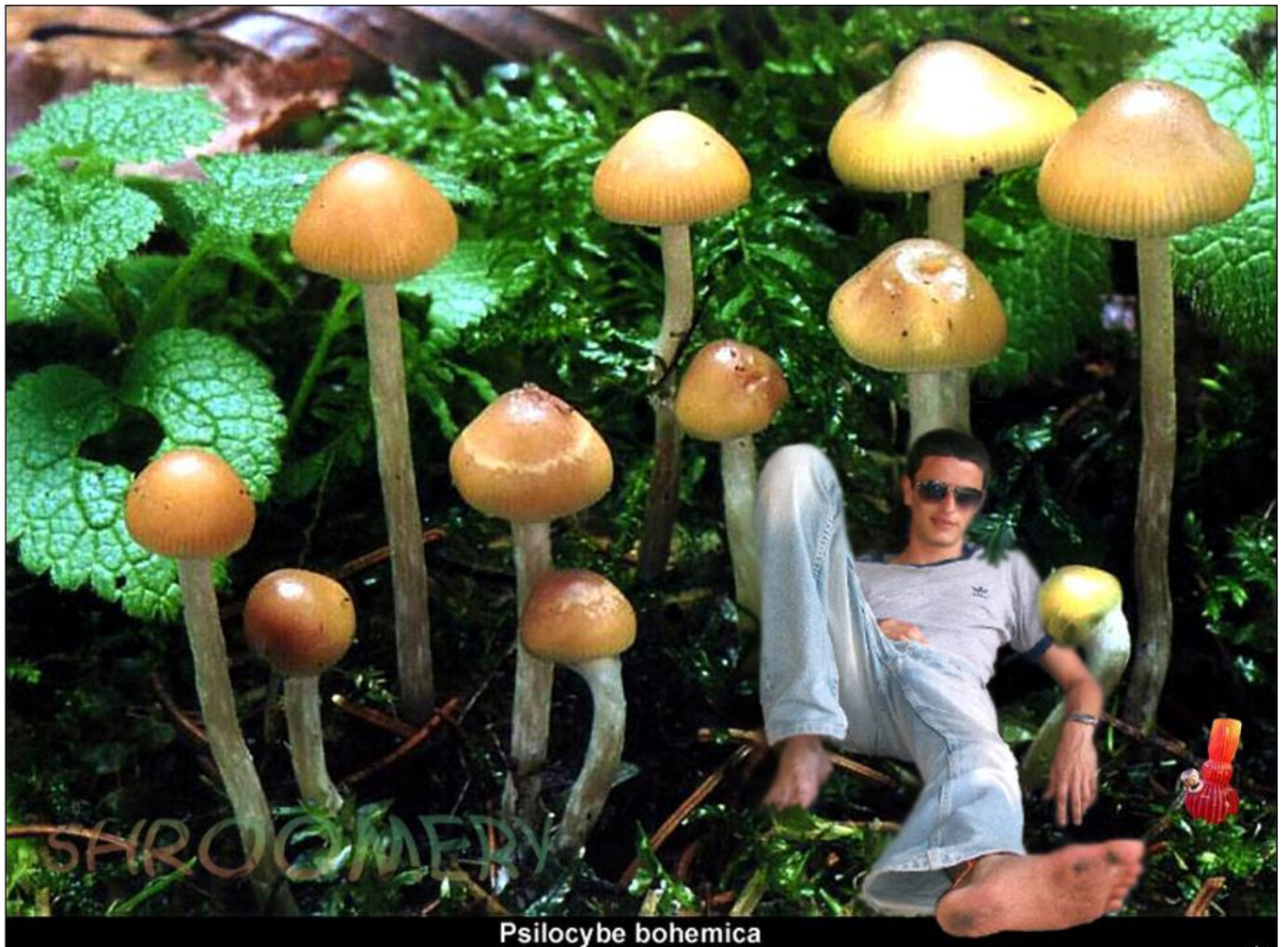


These look like Christian mushroom trees.

Like Mushroom Trees



Grove of Tree-Sized Mushrooms



Psilocybe bohemica

Buns, Like Xn Trees



Like Mushroom Trees



Upturned Cap with Designs Like Foliage Detail



Tall



Large Blue-Stained



Large Single with Lines



Amanita with Teeth Veil Remnants



Phallic



Phallic



Jesus came down from heaven in the likeness of sinful flesh.

Lone



Every Which Way



Crossing of Stems



Crossing of Stems



Wandering



Spiralling Stem



Sort

Half Torn Veil



Long Snaky Stems



Mushrooms that Look Like Buns or Bread



These look like buns - bread.



Side Shot



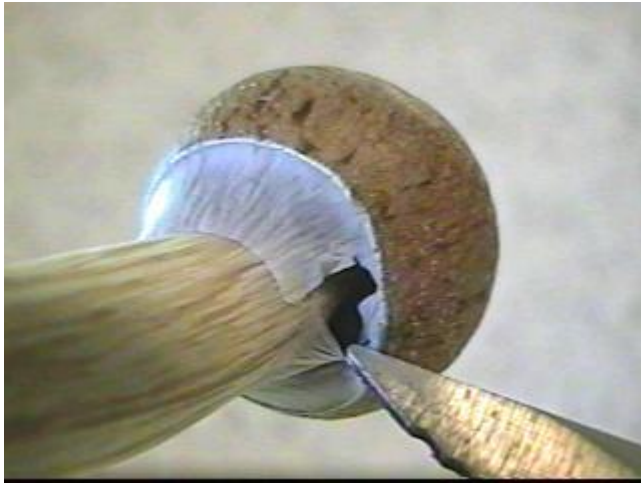
Wobble Babies



Baby Helmet



Tearing Veil with Knife



Torn Veil Underside



Torn Veil Underside



<http://www.egodeath.com/christianmushroomtrees.htm>